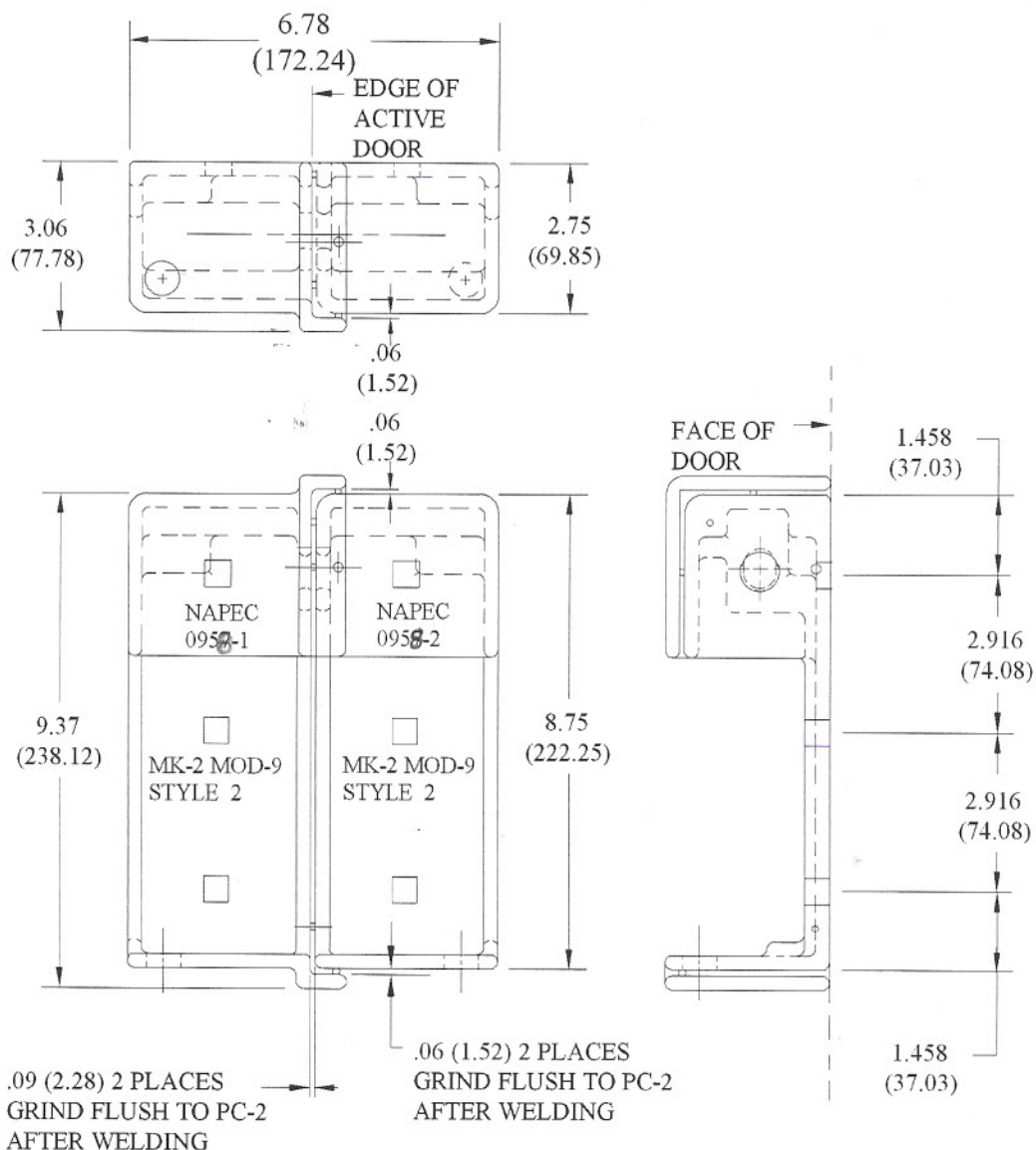


NOTES:

1. On back side of each half, machine or cast 3 holes to accept 0.375-inch (9.52 mm) square neck carriage bolts. Holes to be centered horizontally and vertically spaced 1.458-inch (37.03 mm) from top and bottom outside surface. Bolt hole centers 2.916 inches (74.08 mm) apart.

0957

FIGURE 1. Style 1, MK 2 MOD 9.



0958

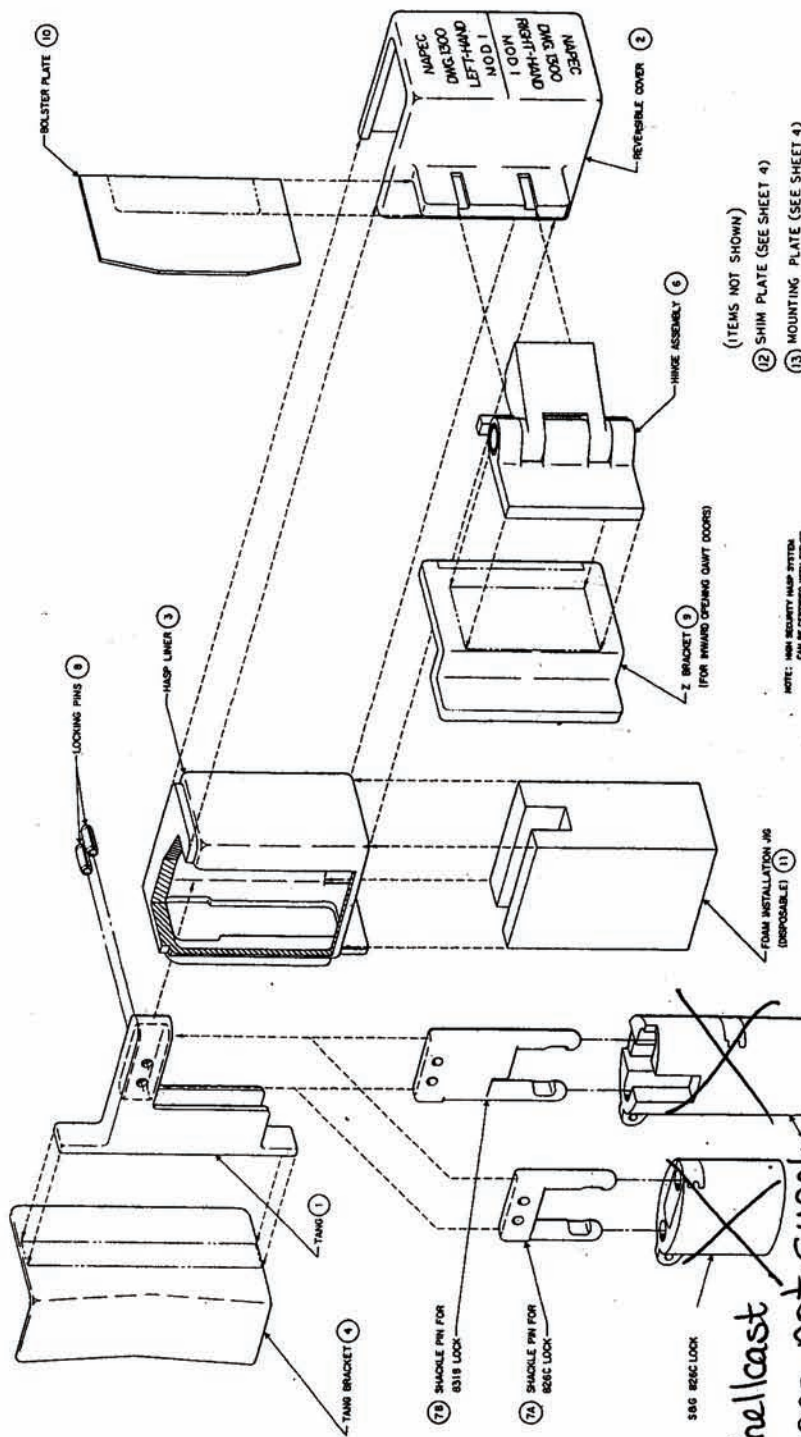
FIGURE 2. Style 2, MK 2 MOD 9.

# Parts List

**NOTES:**

1. MATL. TO BE 304 L FOR ITEMS 1,2,3,4,6,7,8,9. AVAILABLE FROM CANNON-MARSHION-COMP. 2875 LINCOLN ST., MUSKOGEE, MICH. 43441
2. INVESTMENT CASTING/AM-C-6021E Q1-28 OF CERTIFIED ALLOYS.
3. "TYGLO" INSPECTION PER 16866.

|       |        |
|-------|--------|
| NAPEC | 1300   |
| SHEET | 1 OF 4 |



(ITEMS NOT SHOWN)  
 12 SHIM PLATE (SEE SHEET 4)  
 13 MOUNTING PLATE (SEE SHEET 4)

NOTE: HIGH SECURITY HANG SYSTEM CAN BE CERTIFIED WITH OTHER THE BASIC ON THE 8318 LOCK.

SUPPLIED BY:  
 SHELLCAST, INC.  
 P.O. BOX 128  
 WHITEHALL, MI 49461  
 (616) 893-8245 & 893-2195

Shellcast  
 does not supply  
 the locks.

|  |  |
|--|--|
| DEPARTMENT OF THE ARMY<br>DRAWING TITLE: HIGH SECURITY HANG SYSTEM<br>DRAWING NUMBER: 1300<br>DATE: 1300<br>SHEET 1 OF 4 | HIGH SECURITY HANG SYSTEM<br>SHIM PLATE<br>PICTORIAL<br>PARTS LIST |
|--|--|

Please reference parts list

| INSTALLATION PROCEDURE | (2) REVERSIBLE COVER #764 | (3) HASP LINER 763 | (1) TANG 304 765 | (7B) SHACKLE PIN FOR 831 LOCK 790 | (7A) SHACKLE PIN FOR 826 LOCK 790 | (8) LOCKING PINS | (10) BOLSTER PLATE | (9) BRACKET Z 782 | (6) HINGE ASSY 778776 | (4) BRACKET TANG 838 | (11) INSTALLATION FOAM JIG | (13) SHIM MOUNTING PLATE | (12) SHIM PLATES SET |
|------------------------|---------------------------|--------------------|------------------|-----------------------------------|-----------------------------------|------------------|--------------------|-------------------|-----------------------|----------------------|----------------------------|--------------------------|----------------------|
| NAPEC 1311             | X                         | X                  | X                | X                                 | X                                 | X                | X                  |                   |                       |                      | X                          |                          | X                    |
| NAPEC 1313             | X                         | X                  | X                | X                                 | X                                 | X                | X                  |                   |                       | X                    | X                          |                          |                      |
| NAPEC 1314             | X                         | X                  | X                | X                                 | X                                 | X                | X                  |                   |                       |                      | X                          |                          | X                    |
| NAPEC 1315             | X                         | X                  | X                | X                                 | X                                 | X                |                    |                   | X                     |                      | X                          | X                        | X                    |
| NAPEC 1316             | X                         | X                  | X                | X                                 | X                                 | X                | X                  |                   | X                     |                      | X                          |                          | X                    |

\*

\*